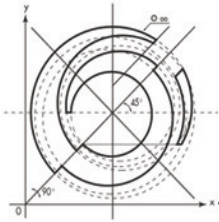


Febr. 2001

AG 
TURBO

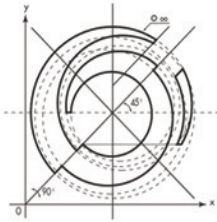
ALSTOM Power Support GmbH

ALSTOM



AGTurbo Partners

- **BMW** **Federal Ministry of Economy and Technology**
- **Industry**
-
- **Research Centers**
-
- **Universities**



Members

Research Centers

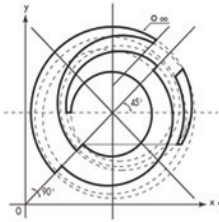
BAM Berlin
DLR Cologne
FHG- IZFP Saarbrücken
Weiterstraß-Institut Berlin

Industry

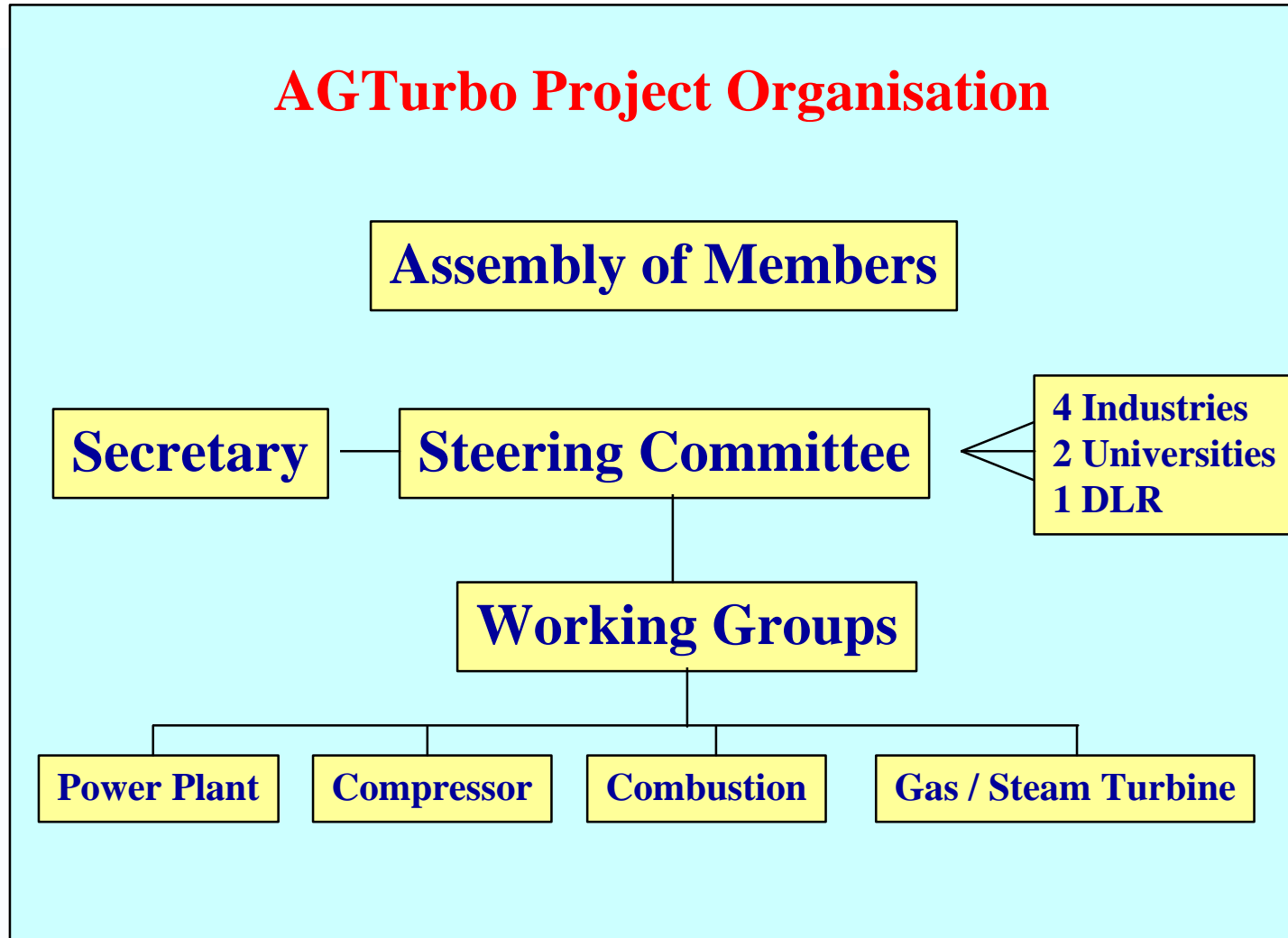
ALSTOM Power Mannheim
MTU Aero Engines München
Rolls Royce Germany Berlin
Siemens/KWU Mülheim/Berlin

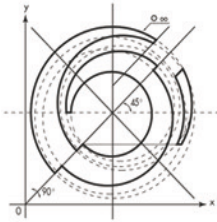
Universities

RWTH Aachen	U Hannover
TU Berlin	U Heidelberg
RU Bochum	UGh Kassel
U Braunschweig	U Karlsruhe
BTU Cottbus	UBW München
TU Darmstadt	TU München
TU Dresden	U Stuttgart
UGH Essen	HTWS Zittau-Görlitz



AGTurbo Project Organisation





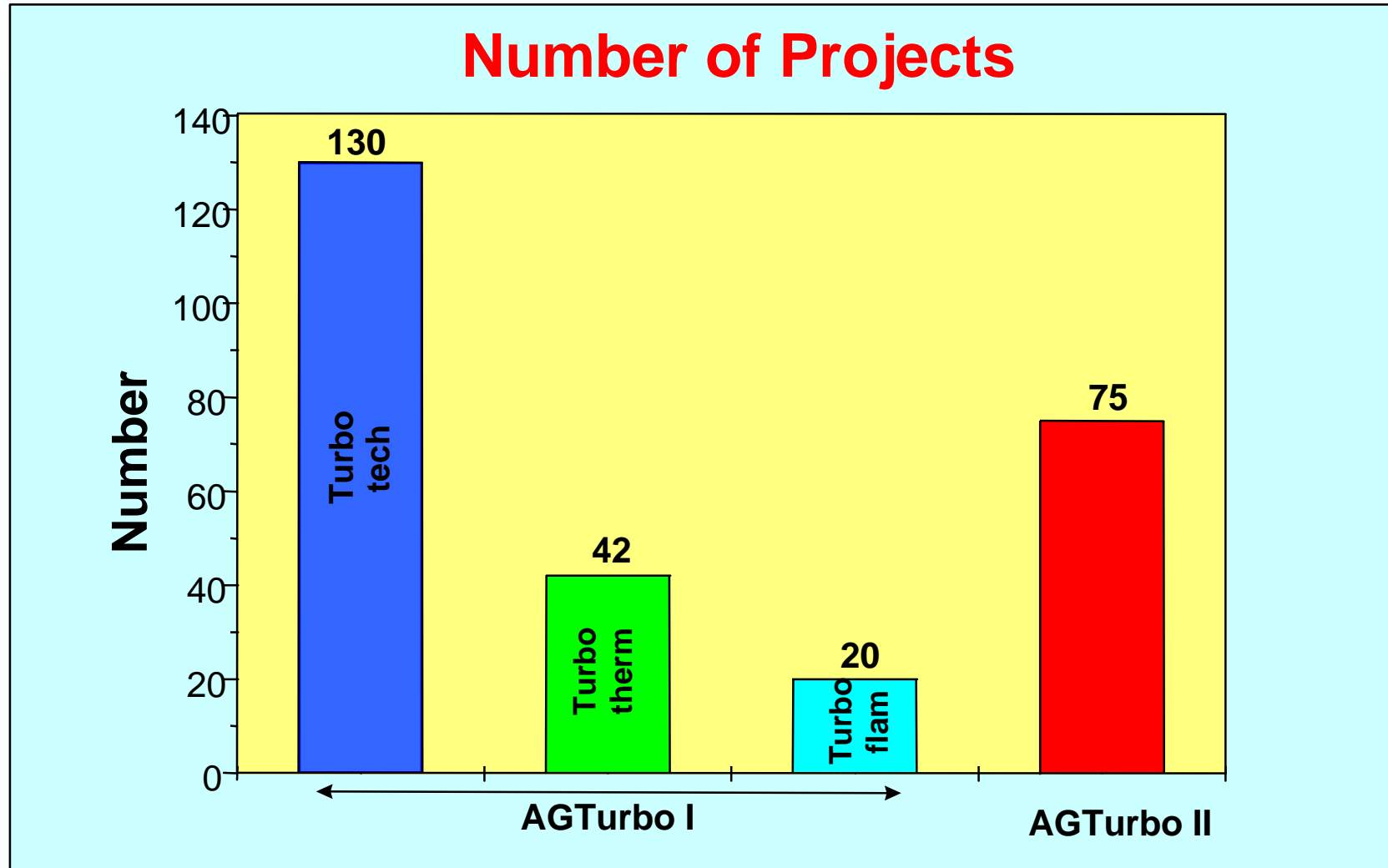
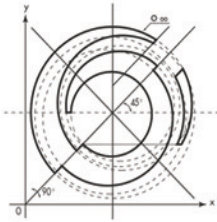
Project Aims of AGTurbo

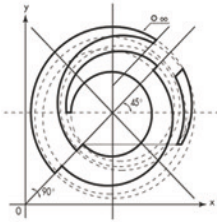
The joint research projects

AGTurbo I High Temperature Gas Turbine

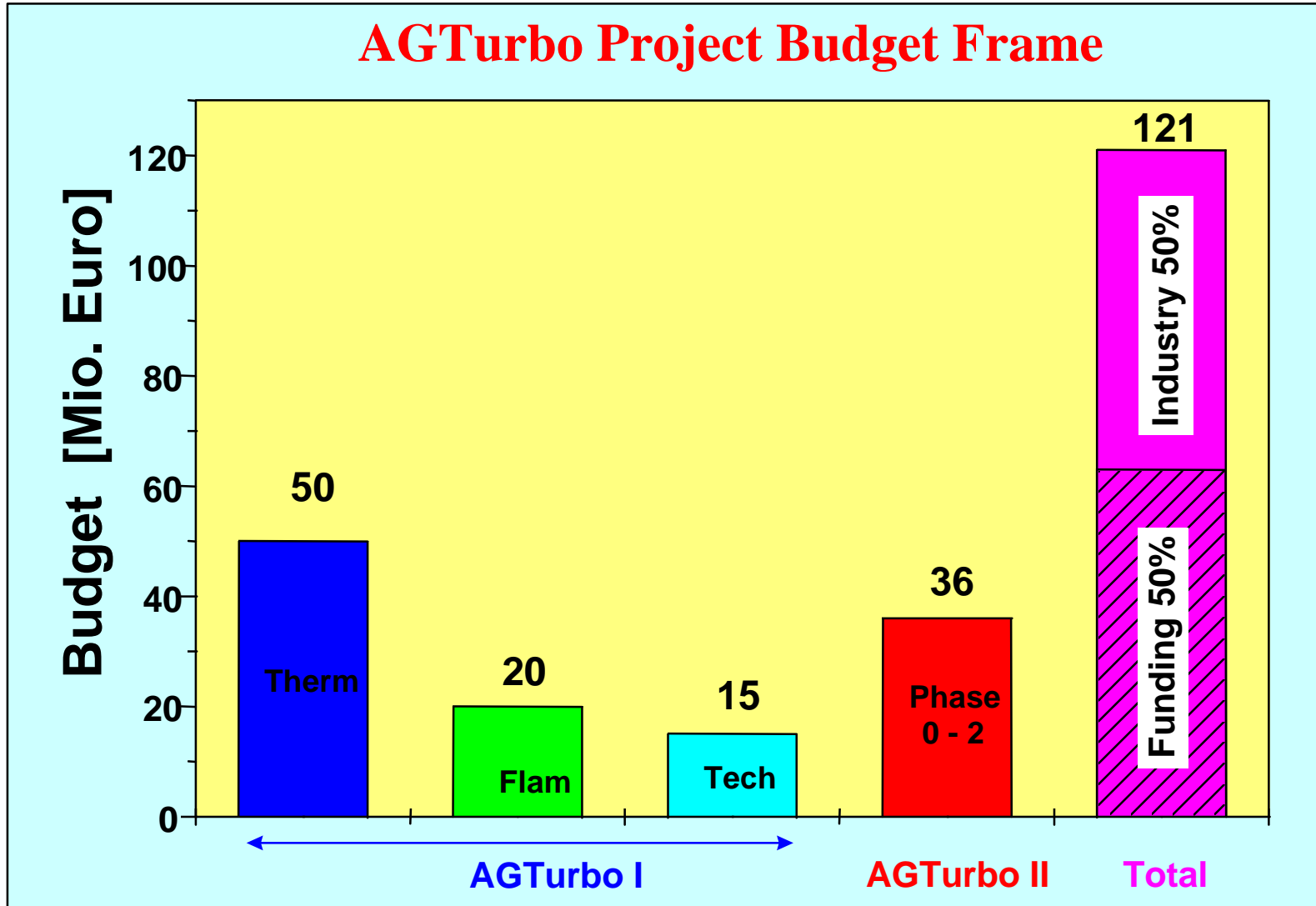
AGTurbo II Low CO₂ -Power Plant “500 MW on a Single Shaft”

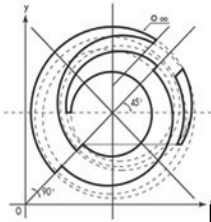
- Aims:**
- **Increase of plant efficiency**
 - **Reduction of environmental pollution**
 - **Increase of power output**
 - **Increase of reliability, availability and maintenance**
 - **Cost reduction of development, fabrication and maintenance**





AGTurbo Project Budget Frame





AGTurbo Project Duration

